

Vitasol Twin Lamb

Pregnancy Toxaemia is a metabolic disorder where the body's energy requirements are not being met, resulting from a significant decline in the level of nutrition.

In the final 2 months of a ewe's pregnancy, 70% of the lamb's growth is taking place. It is therefore particularly important at this time to make sure the ewe has enough good feed to keep her and her lambs going.

Ewes carrying twins are more often affected, but ewes carrying single lambs can also get the disease. Events like stress, worms, feet problems, mouth problems, handling and transport can bring on Pregnancy Toxaemia. Ewes should not be without feed for longer than 4 hours.

Energy

Provide additional energy to fill the nutritional deficit.



Vitamins

To maintain a healthy immune system

Vitasol Twin Lamb is a concentrated double energy source with additional vitamins to maintain ewe energy and health to avoid the onset of twin lamb disease.

**Ewes should be dosed 50-100 ml twice per day, if showing signs of twin lamb disease as a preventative use 50ml as required.
Each 2.5 litre flexipak provides 50 doses.**

**STARLYNE FEEDS LTD
3 IRTHLINGBOROUGH ROAD, FINEDON
NORTHANTS, NN9 5EH**

Freephone 0800 015 2205

www.starlyne.co.uk E-Mail: sales@starlyne.co.uk

Vitasol New Lamb

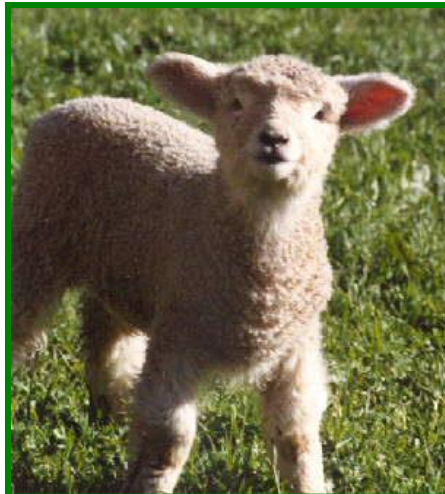
Profitability in sheep farming is largely dependent on the number of lambs weaned per ewe each year. Lamb survival is a result of good ewe management before and during lambing and attention to early care of lambs.

Vitasol New Lamb is a new treatment for new born lambs to provide a healthy start in life in the first few hours.

New Lamb is a novel method of ensuring the best chance is given to each lamb.

Energy

- Maintain metabolism
- Build strength
- Generate heat



Prebiotics

Create a healthy gut environment to prevent other bacteria taking hold.

Prebiotics are food for beneficial bacteria; they are more effective than probiotics which will die without a suitable food source.

A healthy lamb is more able to fight common diseases such as watery mouth.

To provide a complete start omega 3 oils and vitamins are included to ensure brain function and superior cardiovascular function, immune system, health eyes, skin and joints.

Each 1 litre flexipak will provide 200 doses of Vitasol New Lamb.

STARLYNE FEEDS LTD
3 IRTHLINGBOROUGH ROAD, FINEDON
NORTHANTS, NN9 5EH

Freephone 0800 015 2205

www.starlyne.co.uk

E-Mail: sales@starlyne.co.uk